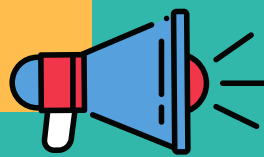


# LEARN TO USE PREPOSITIONS

## OF TIME



A preposition is a word or group of words used before a noun, pronoun, or noun phrase to show direction, time, place, location, spatial relationships, or to introduce an object.

## PREPOSITIONS OF TIME

To refer to one point in time, use the prepositions "in," "at," and "on."



### "IN"

Use "in" with parts of the day (not specific times and night), months, years, and seasons.

### EXAMPLES



- He reads **in** the evening.



- Christmas is celebrated **in** December.



- She was born **in** 1998.



- Snow falls **in** winter.

### "AT"



Use "at" with the precise time of day. Also use "at" with noon, and night, midnight.

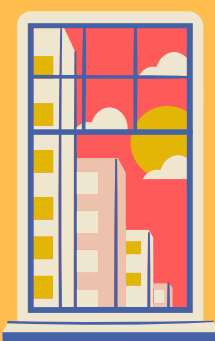
### EXAMPLES



- She often goes for a walk **at** night.



- I go to work **at** 8:00 o'clock.



- He eats lunch **at** noon.

### "ON"

Use "on" with days of the week, specific days, dates, and part of the specific day.

### EXAMPLES



- My birthday is **on** the 1 st Februrary.

- I work **on** Saturdays.



- We will have a party **on** Friday night.

- We put the flag **on** Independence Day.

