



UNIVERSIDAD PEDAGÓGICA
NACIONAL
Educadora de educadores

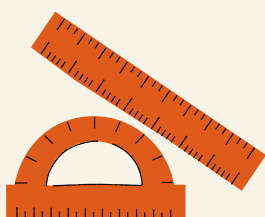
COMPARATIVES & SUPERLATIVES ADJECTIVES



Adjectives are the words that modify or qualify nouns. One of its main characteristics is that they can modify a single noun or several nouns at the same time to express their differences through comparisons.

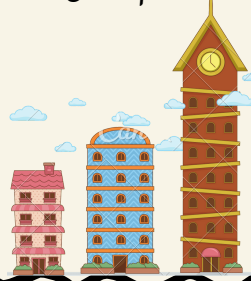
COMPARATIVES

Comparative adjectives are used to compare characteristics or qualities between objects, people, or animals.



SUPERLATIVES

A superlative adjective is used to highlight a characteristic of an object, person, or animal, which makes it different from the rest of the group in which it is found.



SUPERIORITY, INFERIORITY OR EQUALITY

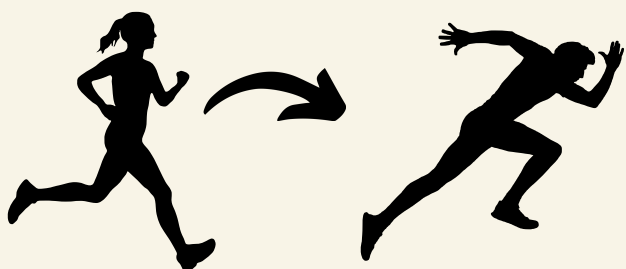
* Adjective of a syllable: Adjective + **er** + than

Example: Tall
Danny is **taller** than me



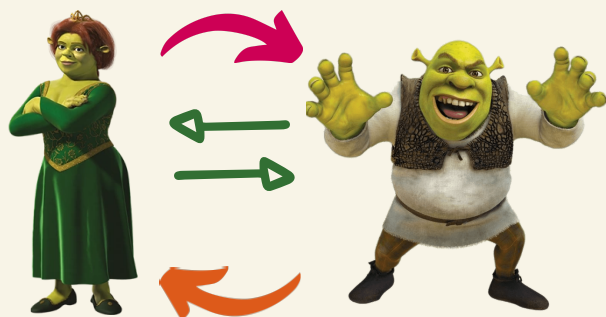
* Two-syllable adjectives ending in -y:
Adjective + **ier** + than.

Example: Easy
Jogging is **easier** than running



* Adjectives of **two syllables or more**, to say more or less than: **more** or **less** + adjective + than

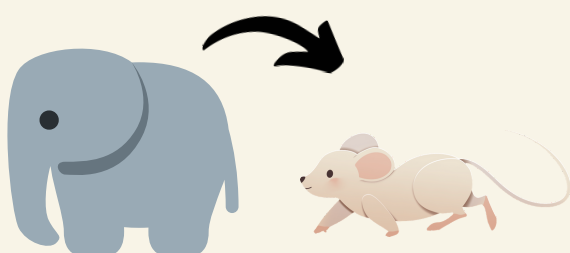
Example: Beautiful
Fiona is **more beautiful** than Shrek
Shrek is **less beautiful** than Fiona



And to say that they are equal: as + adjective + as
Example: Fiona is **as beautiful as** Shrek

* With adjectives ending in **CVC** (consonant, vowel, consonant), the last consonant is **doubled**.

Example: Big
The elephant is **bigger** than a mouse



* Form the superlative forms of a one-syllable adjective by adding -est: the + adjective + est.

Example: Tall and Short

Maria is the **tallest** girl in the class
Lorena is the **shortest** in the class.



* If the one-syllable adjective ends with an **e**, just add -st: the + adjective + st. And ends with **y**, change the **y** to **i** and add -est:

Example: Large- Busy

- My house is the **largest** one in our neighborhood.



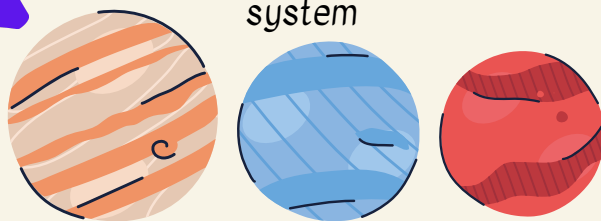
- The boss is the **busiest** at work.



* With adjectives ending in **CVC** (consonant, vowel, consonant), the last consonant is **doubled**. And add -est: the + adjective ending in CVC and doubled consonant + est.

Example: Big

Jupiter is the **biggest** planet in our solar system



* Adjectives of **two syllables or more**, is placed "**most**" = the + most + adjective

Example: Famous

Michael Jackson was one of the **most famous** celebrities.

