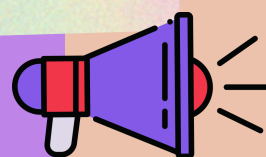


# LEARN TO USE PREPOSITIONS

## OF PLACE



A preposition is a word or group of words used before a noun, pronoun, or noun phrase to show direction, time, place, location, spatial relationships, or to introduce an object.

## PREPOSITIONS OF PLACE

To refer to a place or the position of a person, you can use the prepositions "in", "at", and "on". They are one of the most common prepositions that can be used to indicate a place or the position of a person.

### "IN"

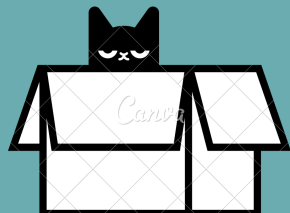
is used to indicate both closed spaces and open spaces. We use it to indicate that something is inside a thing, in a closed place, or inside something physically, and it is also used to indicate that it is in a geographical place.



• I live **in** Colombia.

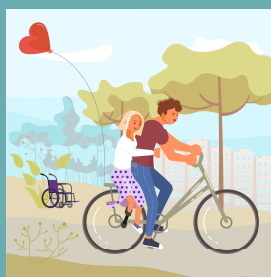


• The cat is **in** the box



### EXAMPLES

• My mom is **in** the kitchen.



• They are **in** the park.

### "AT"

is used in front of buildings, for events, positions such as before "top", "bottom", "the end of", and "arrive". Also, when we refer to places where we do something specific, such as the university (not cities or countries), and a specific point.



### EXAMPLES



- He is **at** home.
- They are **at** the concert.
- The title is **at** the top of the page.
- I study **at** the UPN.
- I am **at** the sitp stop.

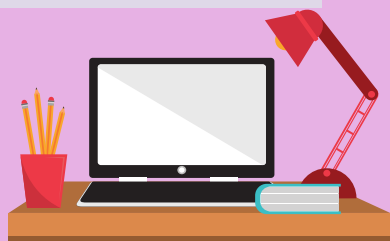


### "ON"

is placed in front of names of surfaces such as a table, when we refer to parts of a room such as the wall, to indicate that someone is inside a public transport (except taxi and car), address, and when it is on the floor of an edifice.



### EXAMPLES



- The computer is **on** the table.
- They have a photograph **on** the wall.
- I am **on** the bus.
- The bathroom is **on** the left.
- My apartment is **on** the second floor.

